

FIMLS NEWSLETTER

ISSUE 11- JULY 2023



PACIFIC SPECIALIST HEALTHCARE

Nadi

Pacific Specialist Healthcare recently opened their facility in Nadi. PSH Nadi is the largest private hospital in the South Pacific. It has a 100 bed capacity, over a 4,000 square meter floor space spread over 5 floors. The services provided by the healthcare facility include inpatient and outpatient services, specialities, diagnostics, birthing and neurological services.

At Pacific Specialist Healthcare, diagnostics equipment are highly invested in to ensure timely and accurate results. The in-house laboratory has some of the most advanced testing equipment. The laboratory also caters for outside clinics and practitioners for their specimen testing requirements. The official opening of the PSH was officiated by The Prime Minister, Hon. Sitiveni Rabuka on the 4th of July, 2023. Services offered by the laboratory include:

1. Haematology
2. Biochemistry
3. Microbiology
4. Serology
5. Blood Bank
6. Histopathology
7. Cytology (Pap smear/Non Gynae)
8. Pathology services



July Webinar 2023

The Fiji Institute of Medical Laboratory Science have been having a CME (Continuing Medical Education) sessions through webinars every month. These are informative sessions with topics presented to further develop knowledge on areas concerning medical laboratory in Fiji and the Pacific. These webinars are also a way to gain CPD points for the FIMLS members as the CPD points need to be collected upto a 100 points in order to qualify a member for renewal of membership the following year.

the webinar presenter for the Month of July was Mr Simone Naikarua and The topic for the webinar was "Biosafety in Laboratory Processing".

The Fiji Institute of Medical Laboratory Science webinar team welcomes any member to present at the webinars at the end of each month and all those interested can contact the FIMLS committee for further information.

CONTACT US

If you want to share ideas, news or stories regarding our field, feel free to contact your respective representatives in each division or email us at info@fimls.org.fj. Happy reading from the FIMLS newsletter team.

CWM LABORATORY- COBAS PRO

The Minister of Lands & Mineral Resources and Acting Minister of Health & Medical Services, Hon. Filimoni Vosarogo, alongside World Bank Vice President for East Asia Pacific Ms Manuela V. Ferro, recently completed a tour of CWM Hospital. In this visit, the new Cobas Pro was also commissioned at the CWM Laboratory



PPTC - QUALITY SYSTEMS IN LABORATORY TESTING

A first lot of students completed the "Quality Systems in Laboratory Services Course" from the Pacific Pathology Training Centre (PPTC). The PPTC acknowledged the students commitment, dedication and determination towards promoting Quality in their respective Pacific Island laboratories.

Dr. Ron McKenzie, one of the co-founders of the PPTC presented the certificates to the students. The students that graduated are:

1. Reema Kumar-Fiji CDC Laboratory
2. Feao Muli- Tonga Vaiola Hospital Laboratory
3. Tiina Faaalo- Tuvalu Princess Margaret Hospital Laboratory
4. Dhanbhagium Gounder: Fiji-Nadi CDC Laboratory



FIMLS NEWSLETTER



Issue 11- July 2023

PACIFIC LABORATORY SPECIALISTS

Pacific Laboratory Specialists ended their Cervical Screening awareness at Wailea settlement funded by DFAT in partnership with RFHAF and IPPF.

This year's Logo: Get Informed, Get screened, Get Vaccinated
Cervical Cancer can be cured if detected very early



Pacific Laboratory Specialists in partnership with Reproductive and Family Health conducted awareness and screening of Prostate Cancer and Cervical Cancer at Tamavua Village.

#Early Detection saves lives



PACIFIC LABORATORY SPECIALISTS Opens New Lab in Apia, Samoa ,

His Excellency General the Honourable David Hurley AC DSC (Retd) and Her Excellency Mrs. Linda Hurley, toured with a soft launched diagnostic pathology lab called the Samoa Diagnostic Medical Laboratory.



FIMLS NEWSLETTER


Issue 11- July 2023



Fiji Institute of Medical Laboratory Science MERCHANDISE 2023

GLASS COFFEE CUP WITH LID
Stylish get practical

\$20 each



Two Different Drinking Holes
Helps eliminate overflow. (They get busy a coffee cup)

Leak-proof Silicone Seal
Protects against leaks of water or coffee.

Thicken Cup Bottom
Keeps coffee from becoming too hot.

Wide Mug Coffee Mouth
Easy to clean and add fruit, ice or jam.

Non-slip Silicone Ring
Contributes to hold, anti-slip and anti-fall.



Cup Specifications

- 350ml Cup
- Hot & Cold
- BAP Free
- Reusable
- Freezer Safe

2023 Medical Laboratory Professionals Week Themed Merchandise

ORDER TODAY

To place your orders email:
treasurer@fimls.org.fj

DIY ALL KINDS OF DRINKS YOU LIKE



\$10.00 each



\$12.00 each

Colours Available:

- Red
- White
- Black

Webinars FIMLS Scientific CME's





\$7.00 each



\$20.00 each

COP Points to Grab

FIJI INSTITUTE OF MEDICAL LABORATORY SCIENCE (FIMLS)

PRESENTS

FIMLS SCIENTIFIC CME (WEBINARS)

05 POINTS Per Session (Attendance)

10 POINTS Per Session (Presenter)

ONE SESSION PER MONTH, STARTING FROM MAY

If you are interested to present email VP West on: vpwest@fimls.org.fj

FIMLS NEWSLETTER

Issue 11- July 2023



2023 FIMLS Annual Seminar

EVENTS DETAILS

Date: 30th September & 1st October, 2023
Venue: Sheraton Fiji Golf & Beach resort
Theme: Expanding Medical Laboratory Practice in the face of current Economic Realities; Innovations, Equipment and Manpower Development.

REGISTRATION FEES

\$120 FJD- FIMLS Members
\$180 FJD- Other Delegates
\$150 FJD- Dinner Tickets (Includes Cocktail & Dinner)

30th September, 2023
8am to 5pm- Seminar Day 1

1st October, 2023
8am to 1pm- Seminar Day 2
2pm to 3pm- Team Bonding Exercise
6pm to 7pm- Cocktail
7pm to 10pm- Presentation of Gifts & Dinner

FIMLS BANK ACCOUNT DETAILS

Account no: 8168593
Account Name: Fiji Institute of Medical Laboratory Science
Bank Branch: Pacific House
BSB Code: 068002
Swift Code: BOSPFIJFJ
Bank of South Pacific (BSP)

Registrations are due by 1st September, 2023

CONTACT US

events@fimls.org.fj
info@fimls.org.fj
+679 2827218
www.fimls.org.fj

Annual Seminar 2023

FIMLS ANNUAL SEMINAR ACCOMMODATION

NALAGI Hotel & Resort

STANDARD KING ROOMS
Code: FIMLS 23

\$240 PER NIGHT
CONTACT: 7977015

SHERATON Fiji Golf & Beach Resort

FLEXIBLE STANDARD ROOMS

\$1,367 PER NIGHT
FREE CANCELLATION UNTIL 16TH SEPTEMBER 2023

ABSTRACT CALL

FOR FIMLS ANNUAL SEMINAR ON THE 30th Of September - 1st October 2023

Do you want to present at the FIMLS Annual Seminar this year?

ABSTRACT FORMAT

- Research Title
- Introduction/ Background
- Methodology
- Finding
- Conclusion

Word limit: 250 to 500 words

EMAIL ABSTRACTS TO:
vpwest@fimls.org.fj

Abstracts are to be submitted by 31st August 2023 COB

FIMLS Annual Seminar Cocktail and Dinner night 2023

Sunday 1st October

THEME: LAB MET GALA

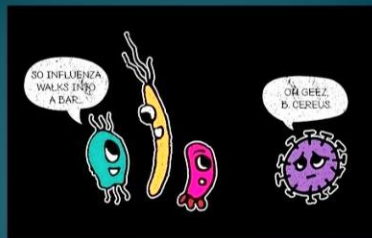
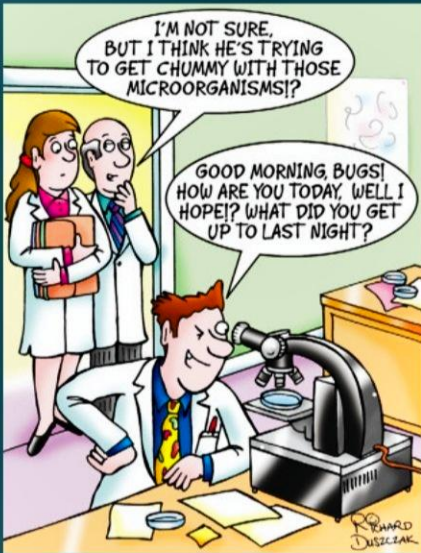
6pm -10pm

ATTENTION


ANNUAL SEMINAR CPD POINTS

If you attend via Zoom 5 CPD points, if you present via Zoom 10 CPD points. If you attend physically, both days, 30 CPD points, and if you present physically and attend both days, 50 CPD points.

LABORATORY HUMOUR



No matter
How Popular they
get, **ANTIBIOTICS**
Will Never
GO **VIRAL**



QUIZ CORNER

LAB FACT #2

The medical hypodermic syringe was developed in 1853 by French surgeon Charles Pravaz and Scottish doctor Alexander Wood.

Insulin Is Produce By_____?

- A. Pituitary Gland
- B. Thyroid Gland
- C. Pancreas
- D. None Of These

